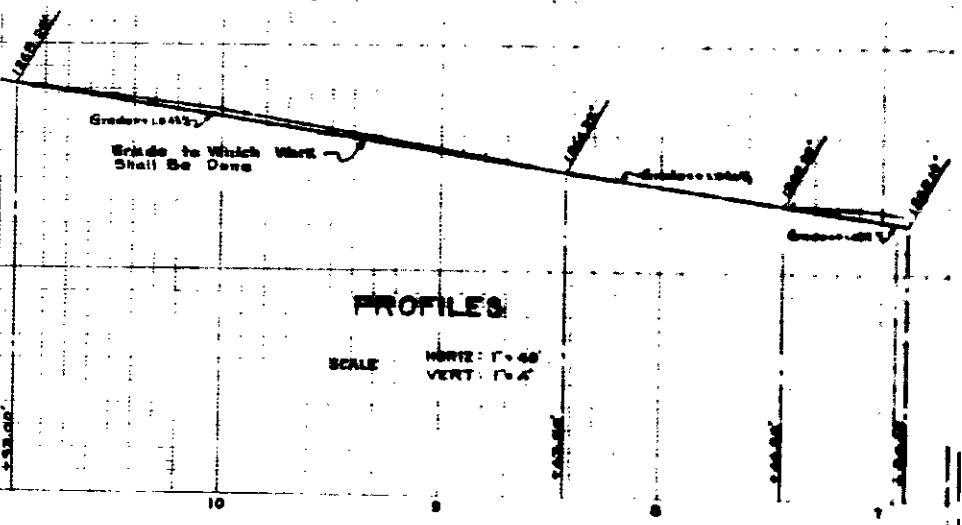


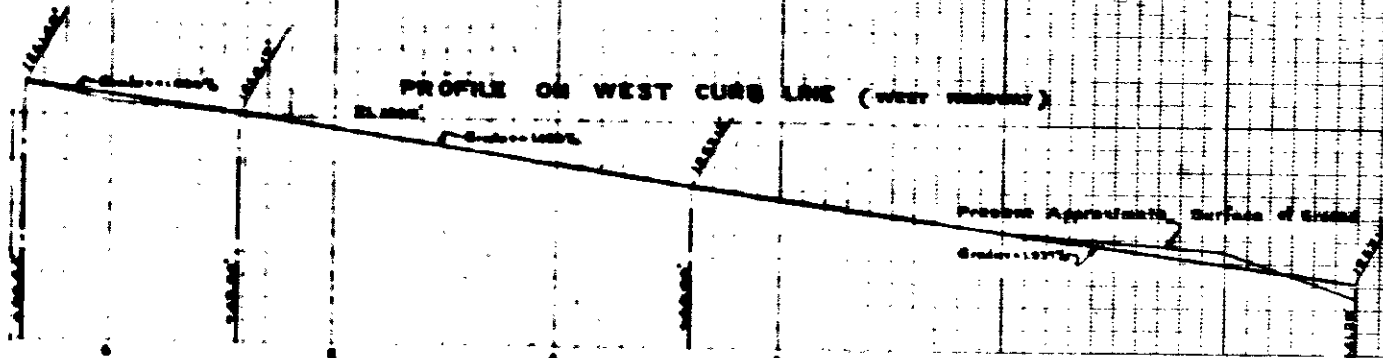
SCALE 1/8" = 1'-0" HORIZ. 1/4" = 1'-0" VERT.

PROFILES

SCALE HORIZ: 1" = 60'
VERT: 1" = 4'

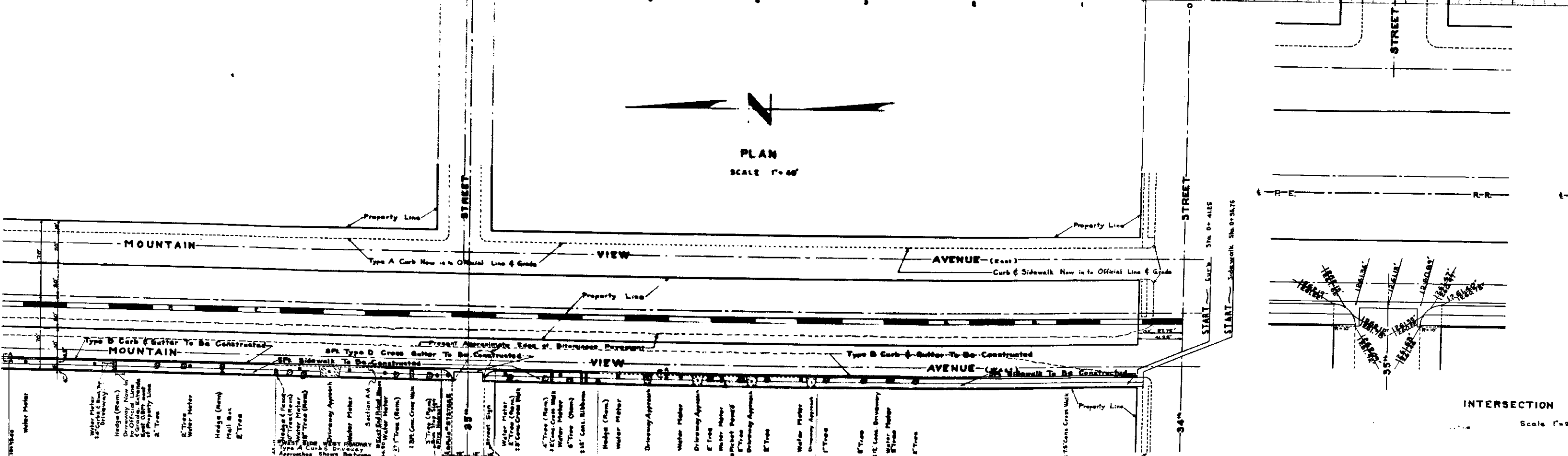


PROFILE ON WEST CURB LINE (WEST SIDE)



PLAN

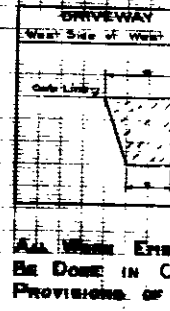
SCALE 1" = 60'



NOTES

1. All obstructions to street right of way marked to be removed by others. All other obstructions shall be removed under this contract.
2. The existing driveway & crosswalk markings shall be affixed as indicated on this Table.

Type	Marked To	Width	Length Present	Exceeds 100' or
DRIVEWAY	1' - 0"	10' - 0"	15'	15'
CROSSWALK	1' - 0"	10' - 0"	15'	15'
DRIVEWAY	1' - 0"	10' - 0"	15'	15'
CROSSWALK	1' - 0"	10' - 0"	15'	15'
DRIVEWAY	1' - 0"	10' - 0"	15'	15'
CROSSWALK	1' - 0"	10' - 0"	15'	15'
DRIVEWAY	1' - 0"	10' - 0"	15'	15'
CROSSWALK	1' - 0"	10' - 0"	15'	15'
DRIVEWAY	1' - 0"	10' - 0"	15'	15'
CROSSWALK	1' - 0"	10' - 0"	15'	15'
DRIVEWAY	1' - 0"	10' - 0"	15'	15'
CROSSWALK	1' - 0"	10' - 0"	15'	15'
DRIVEWAY	1' - 0"	10' - 0"	15'	15'
CROSSWALK	1' - 0"	10' - 0"	15'	15'
DRIVEWAY	1' - 0"	10' - 0"	15'	15'
CROSSWALK	1' - 0"	10' - 0"	15'	15'
DRIVEWAY	1' - 0"	10' - 0"	15'	15'
CROSSWALK	1' - 0"	10' - 0"	15'	15'
DRIVEWAY	1' - 0"	10' - 0"	15'	15'
CROSSWALK	1' - 0"	10' - 0"	15'	15'



INTERSECTION DETAIL

Scale 1" = 20'

